

EVAPORATIVE COOLER RANGE

# THE COMFORT OF COOL.



**kaden°**<sup>TM</sup>



There is nothing quite like the relaxing comfort of a cool home on a sweltering, hot day. And Kaden's Evaporative Cooler range makes it possible.

Combining innovative features with intelligent design, Kaden gives you precise control of your home environment. Engineered specifically for Australia's long, harsh summers, Kaden delivers enduring performance matched with whisper quiet operation. Made to last, every Kaden Evaporative Cooler comes with a full 5 year warranty plus the option of extending for a further 2 years. Life is a breeze with Kaden.

#### Product Quality Guarantee

Kaden Evaporative Coolers enjoy a 5 year warranty plus an optional extended 2 year warranty. See page 11 for further details.



+





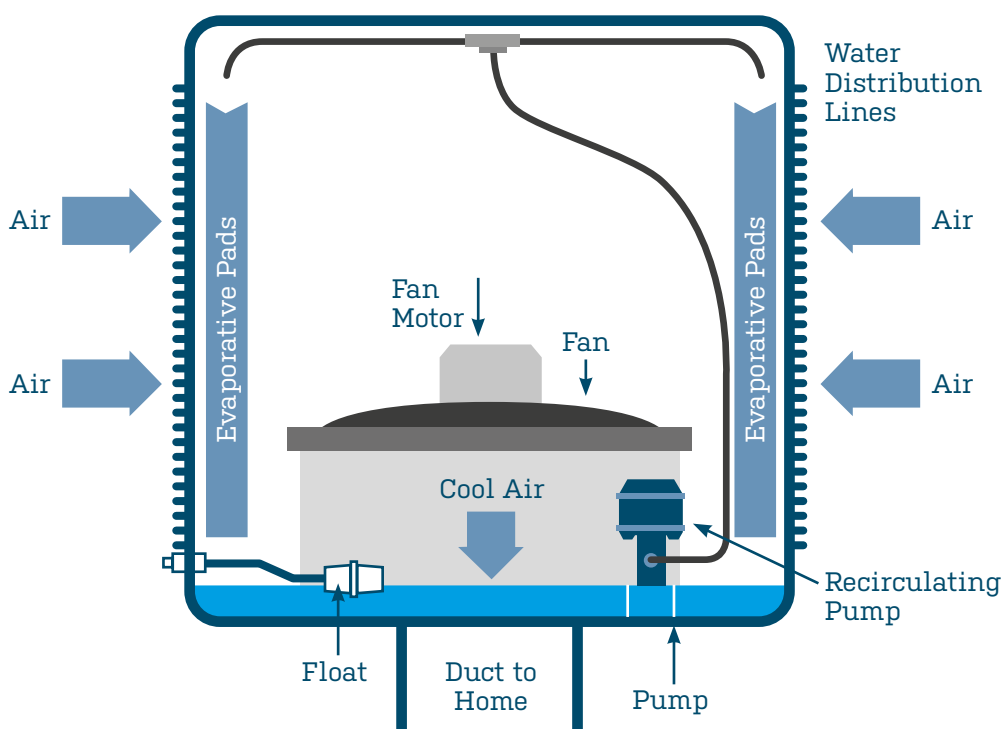
# Evaporative Cooling

---

## What is evaporative cooling?

Kaden Evaporative Cooling is an efficient solution for cooling your entire house providing fresh, clean cool air throughout your home. Evaporative cooling involves an external unit that sits on the roof and is connected by a series of ducting and outlets providing fresh air all throughout your house. An evaporative cooler creates cool air by drawing in fresh air which is carried over moistened pads which cools and filters the air.

Compared to a refrigerated system which dries out the air, evaporative cooling adds moisture to the air therefore improving comfort. Doors and windows can be left open to remove the hot air and create an open fresh environment inside your home.



# an efficient solution for cooling your entire home

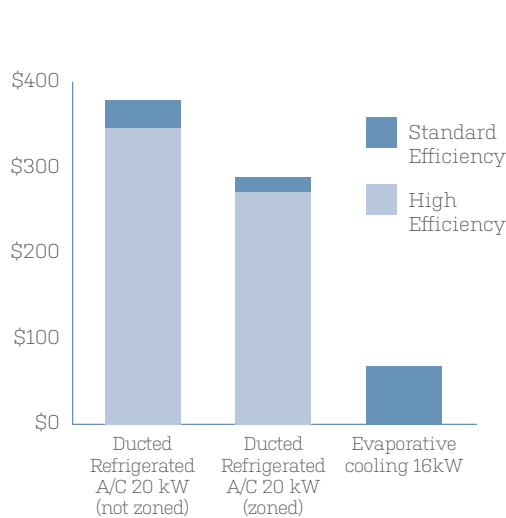
## The most efficient way to cool your home

With rising energy costs efficiency is a critical factor when it comes to selecting which type of air conditioning is right for your home.

Evaporative cooling uses considerably less energy than a comparable ducted refrigerated air conditioning system, producing less emissions and putting more money in your wallet.

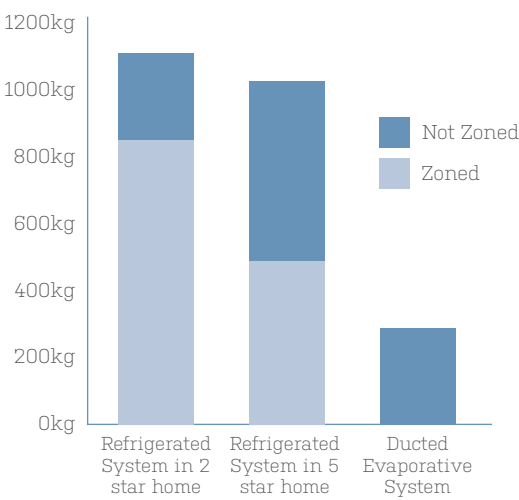
### Annual Energy Cost (\$/Yr)

\*Approximate cost per annum, based on 300 hours usage and a 60% duty cycle for air conditioners. Based on electricity tariff of 28 cents/kWh.



### Annual GHG Emissions (kg/Yr)

\*Based on a 160m<sup>2</sup> house  
\*\*\*Cooling Running Costs\* Sustainable Energy Authority Victoria



## Benefits of Evaporative Cooling



### Fresher

The air inside your home is not re-circulated.



### Economical

Cheaper set up costs and much cheaper running costs using much less energy than refrigerated systems.



### Healthier

A totally natural and comfortable cooling process, evaporative cooling won't dry out the air, preventing irritation to your skin, throat or eyes.



### Quiet

Discreet quiet noise levels.

# Low Profile

The Kaden Low Profile evaporative cooler is a stylish sleek design that sits contoured on your roof. The low profile model uses advanced technologies to ensure quality and reliability, delivering volumes of cool air throughout your home without the large profile of traditional evaporative coolers.

Kaden's Low Profile Smart Water Management System controls the amount of fresh water which is added to the system. After completing a pre-determined number of fill cycles the Kaden evaporative cooler will automatically flush the entire tank and refill it with clean, fresh water. When cooling is no longer required the Kaden Low Profile evaporative cooler will automatically dump water after a pre-set time. This means there is no stagnant water or sediment sitting in the cooler before it starts up again – reducing the need for seasonal maintenance.

## Features

- > Low profile sloping base

> Super quiet axial fan

> Fan speed sensing

> Automatic WinterSeal to prevent heat escaping in winter
- > Smart Water Management System

> Pre-wet function

> Self-cleaning water pump

> High efficiency cooling pads

> Ventilation only setting

The Kaden Low Profile comes with Networker Controller as standard.

## Colours



## Series Low Profile

Models	Airflow L/s @80 Pa	Motor (Watts)	Length (mm)	Width (mm)	Height Front (mm)	Height Back (mm)	Dry Weight (kg)	Operating Weight (kg)	Dropper Duct Connection (mm)
KL16	1,695	750	1100	1100	720	400	47	59	550 x 550
KL22	2,210	750	1100	1100	720	400	48	60	550 x 550
KL25	2,505	750	1100	1100	720	400	50	62	550 x 550
KL28	2,890	1000	1100	1100	720	400	51	63	550 x 550

stylish sleek design  
that sits contoured  
on your roof



# Classic

The Kaden Classic evaporative cooler has been developed for large airflow requirements, plus its stylish design is ideal for both new installations and replacement of older style coolers.

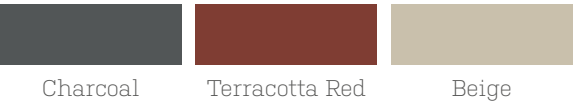
With large airflow and cooling pads, the Kaden Classic's uniquely designed Smart Water Management System and sloping trough keeps water constantly circulating through the system. With a variable speed fan the Kaden Classic also allows the cooler to run slowly for when you only need a light breeze to keep you cool.

## Features

- > High efficiency cooling pads
- > Automatic WinterSeal to prevent heat escaping in winter
- > Extra airflow
- > Smart Water Management System
- > Pre-wet function
- > Self-cleaning water pump
- > Super quiet axial fan
- > Fan Speed Sensing
- > High efficiency cooling pads
- > Ventilation only setting

The Kaden Classic comes with Manual Controller as standard.

## Colours



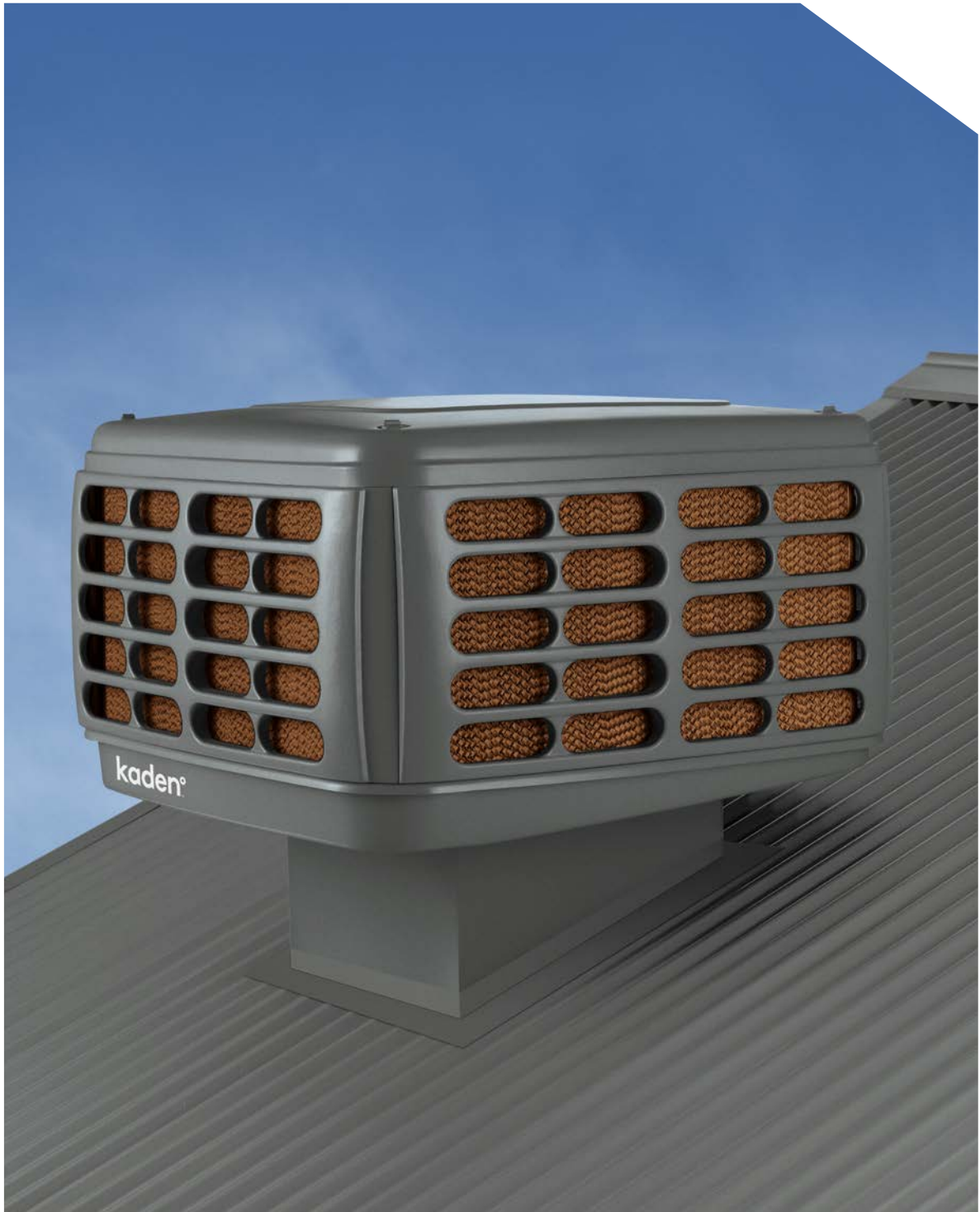
## Series Classic

Models	Airflow L/s @80 Pa	Motor (Watts)	Length (mm)	Width (mm)	Height Front (mm)	Dry Weight (kg)	Operating Weight (kg)	Dropper Duct Connection (mm)
KC17	1,790	750	1100	1100	597	48	63	550 x 550
KC21	2,190	750	1100	1100	682	51	66	550 x 550
KC27	2,795	950	1100	1100	682	51	66	550 x 550
KC32	3,290	1000	1100	1100	945	64	79	550 x 550



---

developed for large  
airflow requirements



# Kaden Controllers

---

Kaden offers a range of controllers to suit your requirement.

## Networker Controller

The Kaden Networker programmable controller provides you with maximum flexibility in the operation of your Kaden Evaporative Cooler. In full automatic mode, the Kaden Networker will detect the surrounding environment and adjust the fan speed and cooling power as required achieving ultimate comfort at the lowest running cost.

The Kaden Low Profile comes complete with a Networker Controller as standard or it can be purchased separately as an upgrade for the Kaden Classic range.



## Manual Controller

The Kaden Manual Controller allows you to turn on the fan or pump or both and to alter the fan speed to your desired setting.

The Kaden Classic comes with Manual Controller as standard.



# Warranty

---

Kaden is committed to total customer care, so you'll enjoy market-leading warranties and full after sales support for many years to come. The Kaden Evaporative Cooler range offers a 5 year warranty on parts and labour for residential & light commercial with the option of extending the warranty for a further 2 years.

## **Extended Warranty Option**

The extended warranty has terms and conditions, including the requirement for regular servicing of the product in accordance with the owner's manual. To be eligible for the extended two year warranty option you must:

- Register your Kaden product online at [www.kadenwarranty.com](http://www.kadenwarranty.com) within the first 12 months of the product being installed, and
- In the fourth year, a paid general maintenance service must be performed by the manufacturer or its appointed nominee.

For full terms and conditions please visit [www.kadenwarranty.com](http://www.kadenwarranty.com)

kaden°

kadenair.com.au

Due to limitations in the printing process the colours in this brochure are a guide only.  
The manufacturer/distributor reserves the right to vary specifications or delete models from their range without prior notification. The manufacturer/distributor takes no responsibility for printing errors. All products enjoy a product replacement warranty. For full warranty details visit [www.metalflex.com.au/kaden](http://www.metalflex.com.au/kaden)

V2 [BROCHURE CODE 108116]