

# Leading edge **Reverse cycle air conditioning**

Split systems



**AUSTRALIAN  
OWNED!**

*“Seeley International never stops striving and innovating to build the world’s most energy efficient heaters and air conditioners.*

*It is this commitment to excellence that’s at the heart of everything we do.”*

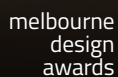
Frank Seeley AM, DUUniv Flin, FAICD  
Founder and Executive Chairman



## Award Winning Company

Seeley International consistently wins awards each year for new product design, innovation and environmental friendliness.

Recent awards include:





# The ultimate choice for comfort in all conditions



## WALL MOUNTED SPLIT SYSTEMS

The ideal solution to cool and heat just one area or room of the home or office.

A wall mounted split system air conditioner consists of two parts; a wall mounted indoor unit and an outdoor unit.



## MULTI SPLIT

Multi split air conditioning enables the connection of up to five indoor units to a single outdoor unit.

A comprehensive range is available including wall mounted split systems and bulkhead ducted units.

# The Braemar difference



## Cost effective

MEPS (Minimum Energy Performance Standards) compliant

DRED (Demand Response Enabling Device) feature



## Australian owned

Seeley International, Australia's leading cooling and heating manufacturer



## Range

Braemar offers a comprehensive range to suit everyone's needs



## Quality

80 year history of Braemar excellence and reliability

Leading technology and innovation continue to enhance quality and performance



## Warranty

Quality that lasts – 5 year comprehensive manufacturer's warranty\*

A network of highly professional dealers and service agents throughout Australia



## Environment

The Infiniti-Aire™ split system range uses eco friendly R410A refrigerant



\*The warranty has terms and conditions, including the requirement for regular servicing of the product in accordance with the owner's manual.



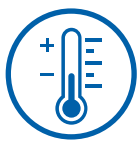
# Standard features

## The DC inverter technology difference

**All Braemar split systems and multi split systems feature DC inverter technology.**

An inverter is a power conversion circuit that electronically regulates the voltage, current and frequency of an air conditioner. This circuit controls the compressor, outdoor and indoor fans, maximising the air conditioner's efficiency.

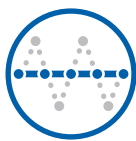
**Compared to conventional models, inverter air conditioners provide:**



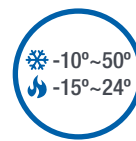
Quicker and better temperature control and comfort



Significantly lower running costs



Elimination of temperature fluctuations

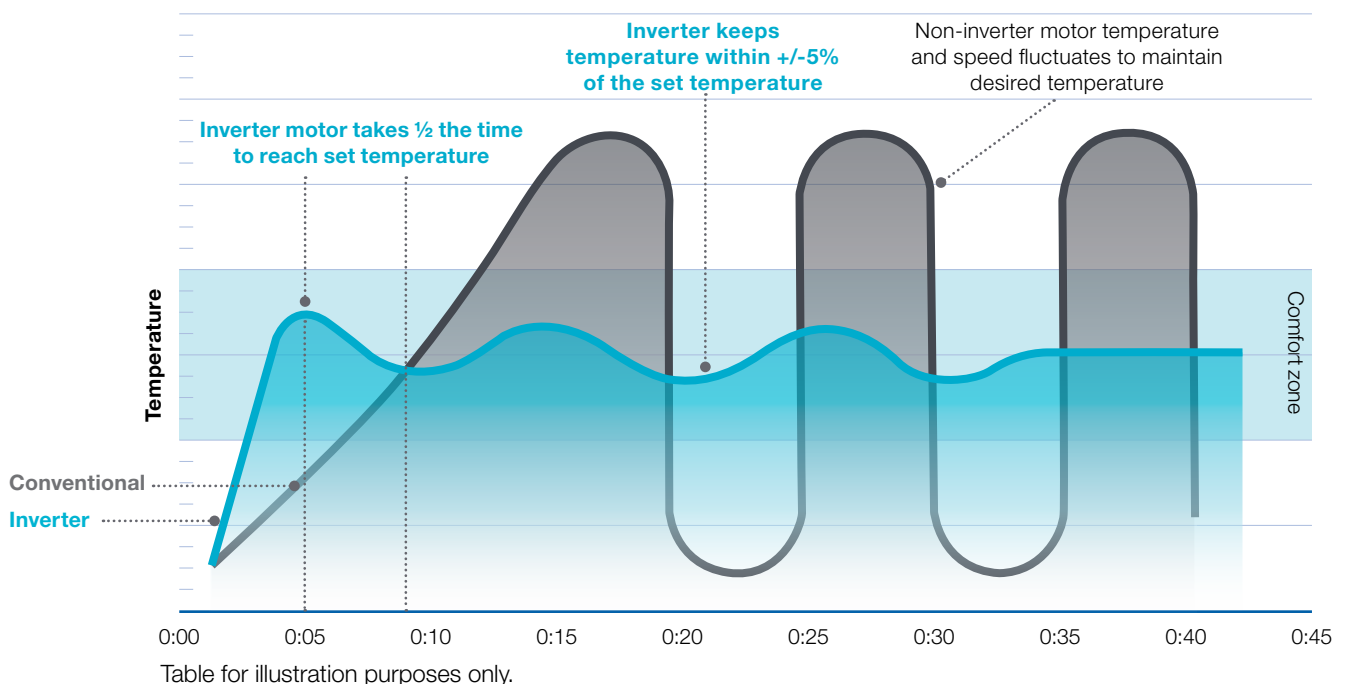


LSHV operating temperatures



Greatly reduced system noise inside and outside the home

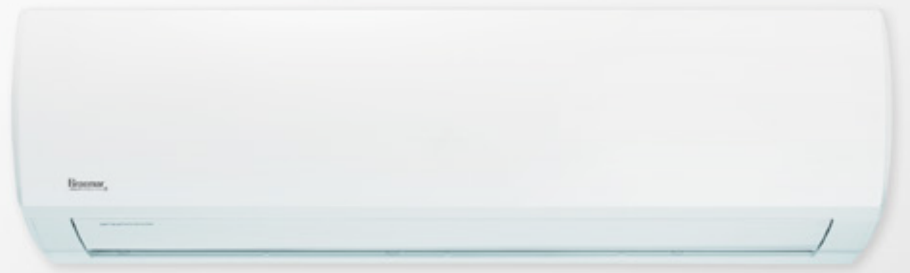
## DC inverter technology vs. conventional



## DRED as standard

With the introduction of smart power meters (PeakSmart in QLD), the electrical supply authority can limit the amount of power to the property at certain times during extreme weather conditions, when the power supply is at peak demand, using DRED (Demand Response Enabling Device).

In some states, the power supply authorities offer financial incentives to consumers who install DRED enabled air conditioning systems. **All of Braemar's latest inverter products now come with DRED as standard.**



# Wall mounted split system air conditioning

**The ideal solution to cool or heat just one area or room of the home or office**

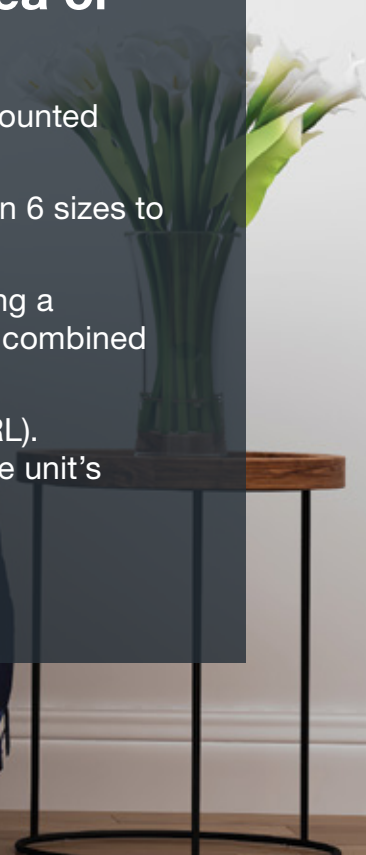
A wall mounted split system air conditioner consists of two parts; a wall mounted indoor unit and an outdoor unit.

The **Infiniti-Aire™** series has a sleek and modern design, and is available in 6 sizes to accommodate spaces from small bedrooms to large open plan areas.

The indoor unit also suits multi split air conditioning systems, thus delivering a consistent appearance throughout the home or office when a multi split is combined with single split systems.

The Infiniti-Aire™ series also has the new Zoned Energy Rating Label (ZERL). This helps consumers to make a more energy efficient choice based on the unit's performance in any particular climate.

For more information on ZERL and how to read the label, please visit:  
<https://www.energyrating.gov.au/products/air-conditioners>



# Infiniti-Aire™ inverter split system

## Indoor unit



Compact, energy efficient and quietly powerful, the **Infiniti-Aire™ Inverter Split System** excels at single zone heating and cooling, while also being adaptable to multi split systems.



**3D AIRFLOW**  
for total comfort  
throughout  
the home



**I FEEL MODE**  
room temperature  
controlled exactly where  
it is required



LSHV operating  
temperatures



**ZERL**  
rated to the latest  
energy rating label  
standard.

- **7 fan settings.**
- **Compact** modern design.
- **Efficient** R410A refrigerant.
- **Available in** 6 sizes.
- **Dry connection available for gate-card**  
or remote on/off, great for schools or hotels.
- **Anti-corrodible coating** on printed circuit boards  
to protect electronics.



Standard with  
**EWPE Smart** app  
for Wi-Fi control



## Additional features



Intelligent  
auto-restart



Auto adjusted  
sleep curves



Draught  
protection



LED display



Timer



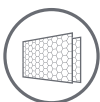
Intelligent  
defrosting



3D Airflow



Turbo button



Protective  
filters



Self-diagnostic



Wide operating  
temperatures



Wired wall  
controller (optional)  
BACnet compatible



Energy saving



Wi-Fi control



Dehumidification

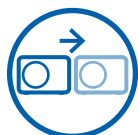
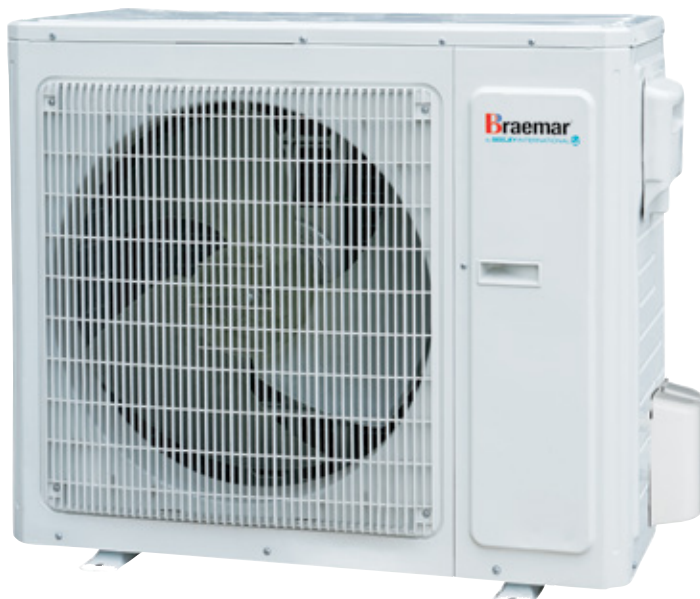


Auto restart



# Infiniti-Aire™ inverter split system

## Outdoor unit



### **FLEXIBLE OUTDOOR PLACEMENT**

long pipe runs  
(up to 25m)



### **GOLD FIN**

Advanced protection  
from the elements



### **SLIM DESIGN**

allows more flexibility  
in placing outdoor units



### **DRED**

demand response  
enabled device as  
standard



### **R410A REFRIGERANT**

high efficiency





# Infiniti-Aire™ range

## Specifications

Model No.	Indoor unit	LSHV25D1S	LSHV35D1S	LSHV50D1S	LSHV60D1S	LSHV70D1S	LSHV80D1S
	Outdoor unit	LCHV25D1S	LCHV35D1S	LCHV50D1S	LCHV60D1S	LCHV70D1S	LCHV80D1S
Capacity	Cooling (kW)	2.40 (0.20~3.70)	3.30 (0.5~4.00)	5.10 (1.80~6.00)	6.00 (1.50~8.60)	7.10 (1.10~9.40)	8.20 (1.70~9.30)
	Heating (kW)	2.87 (0.40~4.00)	3.80 (0.80~4.80)	5.40 (1.90~7.00)	7.00 (2.00~11.00)	8.00 (1.80~10.70)	8.80 (2.40~11.10)
ZERL Star rating (Hot / Average / Cold)	Cooling	4.0 / 3.5 / 3.5	3.5 / 3.0 / 3.0	3.0 / 2.5 / 2.5	3.0 / 3.0 / 3.0	3.5 / 3.0 / 3.0	3.5 / 3.0 / 3.5
	Heating	3.5 / 3.0 / 2.5	3.0 / 2.5 / 2.0	2.5 / 2.0 / 1.5	3.0 / 2.5 / 2.0	2.5 / 2.0 / 1.5	3.0 / 2.0 / 1.5
AEER / ACOP	W / W (tested)	4.11 / 4.08	3.74 / 3.75	3.45 / 3.58	3.78 / 4.10	3.30 / 3.31	3.26 / 3.24
EER / COP	W / W (rated)	4.26 / 4.17	3.84 / 3.84	3.52 / 3.62	3.81 / 4.09	3.38 / 3.39	3.46 / 3.28
Power supply	V / Ph / Hz	220-240 / 1 / 50	220-240 / 1 / 50	220-240 / 50 / 1	220-240 / 1 / 50	220-240 / 1 / 50	220-240 / 1 / 50
Power input	Cooling (kW)	0.57	0.87	1.46	1.57	2.13	2.50
	Heating (kW)	0.69	1.00	1.49	1.69	2.40	2.70
Current input	(A)	6.3	6.7	10.4	15.7	17.0	17.4
Indoor unit	Airflow volume (L/s)	69 ~ 175	109 ~ 189	97 ~ 250	194 ~ 375	208 ~ 389	208 ~ 389
	Sound pressure level min / max (dB(A))	22 ~ 37	26 ~ 40	26 ~ 45	35 ~ 46	35 ~ 48	35 ~ 48
	Sound power level min / max (dB(A))	32 ~ 51	36 ~ 57	36 ~ 62	45 ~ 62	45 ~ 62	45 ~ 64
	Dimensions (W × D × H) outline (mm)	845 x 209 x 289	845 x 209 x 289	970 x 224 x 300	1078 x 246 x 325	1078 x 246 x 325	1078 x 246 x 325
	Net / Gross weight (kg)	10.0 / 12.0	10.5 / 12.5	13.5 / 16.5	15.5 / 19.0	16.0 / 19.5	16.0 / 19.5
Outdoor unit	Sound pressure level max (dB(A))	50	52	57	57	59	59
	Sound power level max (dB(A))	59	62	67	65	65	67
	Dimensions (W × D × H) (mm)	782 x 320 x 540	848 x 320 x 596	965 x 396 x 700	965 x 396 x 700	965 x 396 x 700	980 x 427 x 790
	Net / Gross weight (kg)	30.0 / 32.5	33.0 / 36.0	45.0 / 49.5	53.5 / 58.0	53.5 / 58.0	65.0 / 70.0
Refrigerant	R410A (kg)	0.90	1.08	1.30	1.60	2.00	2.30
Pipe	Liquid pipe size (mm)	6.35 (1/4)	6.35 (1/4)	6.35 (1/4)	6.35 (1/4)	6.35 (1/4)	6.35 (1/4)
	Gas pipe size (mm)	9.52 (3/8)	9.52 (3/8)	12.70 (1/2)	12.70 (1/2)	15.88 (5/8)	15.88 (5/8)
	Pre-charge length (m)	10	10	10	10	10	10
	Additional charge (g/m)	20	20	20	20	20	20
	Max distance height / length (m)	10 / 15	10 / 20	10 / 25	10 / 25	10 / 25	10 / 25
Electrical	Indoor to outdoor (mm²) (includes comms)	4 X 1.0	4 X 1.0	4 X 1.0	4 X 1.0	4 X 1.0	4 X 1.0
	Power to indoor (mm²)	From outdoor	From outdoor	From outdoor	From outdoor	From outdoor	From outdoor
	Power to outdoor (mm²)	3 x 1.0	3 x 1.0	3 x 1.5	3 x 2.0	3 x 2.5	3 x 2.5
Set temp. range	°C	16 ~ 30	16 ~ 30	16 ~ 30	16 ~ 30	16 ~ 30	16 ~ 30
Ambient temperature range	Cooling (°C)	-10 ~ 50	-10 ~ 50	-10 ~ 50	-10 ~ 50	-10 ~ 50	-10 ~ 50
	Heating (°C)	-15 ~ 24	-15 ~ 24	-15 ~ 24	-15 ~ 24	-15 ~ 24	-15 ~ 24

### ZERL Zoned Energy Rating Label

For more information on ZERL, what it means for you, and how to read the new energy label, please visit:  
<https://www.energyrating.gov.au/products/air-conditioners>



## **Multi split system air conditioning**

**A range of indoor units are available including wall mounted split systems, bulkhead units and ceiling cassettes.**

Multi split system air conditioning enables the connection of up to five indoor units to a single outdoor unit.

Save running costs by heating or cooling rooms as required with different temperature settings in each room.



# Multi split range

## Multi split system air conditioning

Cool or heat multiple rooms individually from just one system, with a choice of different indoor solutions to suit your needs.



### Wall mounted split systems

Sleek modern design

The Infiniti-Aire™ multi split range is available in 7 sizes

Refer to page 14 for more information.



### Bulkhead units

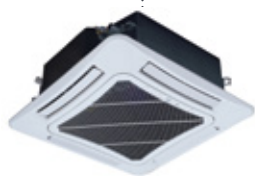
A discreet option, hidden in the ceiling or in a space above a cupboard

Available in 5 different sizes.



### Outdoor unit

A central slimline unit with long pipe run and easy installation.



### Ceiling mounted cassette

Available in two sizes, with 4 fan settings, quiet operation and easy/flexible installation.

# Wall Mounted inverter split systems

## Indoor unit

**Split systems** offer a wall mounted, modern design option.

The **Infiniti-Aire™** is available in 7 sizes for multi split system configurations.



### I FEEL MODE

room temperature controlled exactly where it is required



### WIFI CONTROL

from a smart device



### QUIET

low indoor noise, even at full capacity



### EFFICIENT

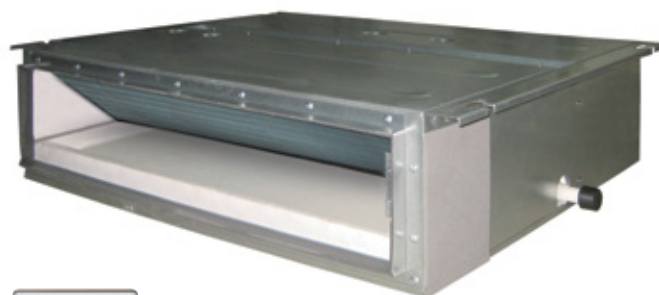
cools and heats quickly

## Bulkhead

## Indoor unit

**Bulkhead units** offer a discreet option, hidden in the ceiling or in a space above a cupboard. Come standard with 2 controls.

Available in 5 sizes.



### EFFICIENT

cools and heats quickly



### LOW PROFILE

visually appealing with a discrete profile design



### QUIET

low noise, even at full capacity



### AUTO RESTART

permits automatic return to previous operating conditions



### EASY AND FLEXIBLE INSTALLATION

built in condensate pump, a light weight fan and easy levelling



# MBHV Cassette

## Indoor unit

### The ceiling mounted cassette

is available in two sizes, with 4 fan settings, quiet operation and easy, flexible installation.



#### AIRFLOW DISTRIBUTION

better airflow distribution from the ceiling



#### QUIET

low noise, even at full capacity



#### EFFICIENT

cools and heats quickly



#### EASY AND FLEXIBLE INSTALLATION

built in condensate pump, a light weight fan and easy levelling

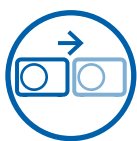


#### EASY MAINTENANCE

easy to clean with a stain resistant surface and easy clean filter

# Multi split

## Outdoor unit



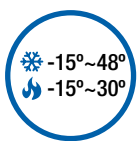
#### FLEXIBLE OUTDOOR PLACEMENT

long pipe runs (up to 75m total)



#### DRED

demand response enabled device as standard



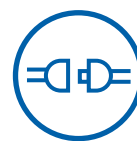
#### WIDE OPERATING RANGE

comfort in extreme conditions (model specific)



#### SLIM DESIGN

allows more flexibility in placing outdoor units



#### FASTER INSTALLATION

single drain connection point

# Multi split

## Specifications

### Infiniti-Aire™ indoor units

Model No.	Indoor unit	LSHV20D1S*	LSHV25D1S	LSHV35D1S	LSHV50D1S	LSHV60D1S	LSHV70D1S	LSHV80D1S
Capacity	Cooling (kW)	2.02 (0.60~2.40)	2.40 (0.20~3.70)	3.30 (0.50~4.00)	5.10 (1.80~6.00)	6.00 (1.50~8.60)	7.10 (1.10~9.40)	8.20 (1.70~9.30)
	Heating (kW)	2.62 (0.60~3.70)	2.87 (0.40~4.00)	3.80 (0.80~4.80)	5.40 (1.90~7.00)	7.00 (2.00~11.00)	8.00 (1.80~10.70)	8.80 (2.40~11.10)
Indoor unit	Airflow volume (L/s)	69 ~ 175	69 ~ 175	109 ~ 189	97 ~ 250	194 ~ 375	208 ~ 389	208 ~ 389
	Sound pressure level min / max (dB(A))	23 ~ 37	23 ~ 37	26 ~ 40	26 ~ 45	35 ~ 46	35 ~ 48	35 ~ 48
	Sound power level min / max (dB(A))	33 ~ 54	32 ~ 51	36 ~ 57	36 ~ 62	45 ~ 62	45 ~ 62	45 ~ 64
	Dimensions (W x D x H) outline (mm)	845 x 209 x 289	845 x 209 x 289	845 x 209 x 289	970 x 224 x 300	1078 x 246 x 325	1078 x 246 x 325	1078 x 246 x 325
	Net / Gross weight (kg)	10.0 / 12.0	10.0 / 12.0	10.5 / 12.5	13.5 / 16.5	15.5/19.0	16.0 / 19.5	16.0 / 19.5
Pipe	Liquid pipe size (mm)	6.35 (1/4)	6.35 (1/4)	6.35 (1/4)	6.35 (1/4)	6.35 (1/4)	6.35 (1/4)	6.35 (1/4)
	Gas pipe size (mm)	9.52 (3/8)	9.52 (3/8)	9.52 (3/8)	12.70 (1/2)	12.70 (1/2)	15.88 (5/8)	15.88 (5/8)
Set temp. range	°C	16 ~ 30	16 ~ 30	16 ~ 30	16 ~ 30	16 ~ 30	16 ~ 30	16 ~ 30



\*LSHV20DIS by special order only

### MBHV indoor Cassette

Model No.	Indoor unit	MBHV45D1S TA03	MBHV71D1S TB04
Capacity	Cooling (kW)	4.5	7.1
	Heating (kW)	5.0	8.0
Sensible Capacity	(kW)	3.26	5.86
Indoor unit	Airflow volume (L/s)	167	328
	Sound pressure range (dB(A))	42 ~ 46	33~39
	Dehumidify Volume (L/Hr)	1.80	1.80
	Dimensions (W x D x H), (mm)	570 x 570 x 260	840 x 840 x 260
	Panel Dimensions (W x D x H), (mm)	650 x 650 x 60	950 x 950 x 60
	Net / Gross weight (kg)	18 / 23	25 / 33
Connection Pipe	Liquid (mm)	6.35 (1/4)	9.52 (3/8)
	Vapour (mm)	12.70 (1/2)	15.88 (5/8)



### Bulkhead indoor units

Model No.	Indoor unit	MDHV25D1S	MDHV35D1S	MDHV50D1S	MDHV60D1S	MDHV70D1S
Capacity	Cooling (kW)	2.50	3.50	4.50	6.00	7.00
	Heating (kW)	2.80	3.80	5.50	6.60	8.00
Indoor unit	Airflow volume (L/s)	125	153	194	278	278
	Sound pressure level (dB(A))	31~37	32~39	33~41	34~42	34~42
	Dehumidify volume (L/h)	0.80	1.40	1.80	2.00	2.50
	Dimensions (W x D x H), outline (mm)	700 x 615 x 200	700 x 615 x 200	900 x 615 x 200	1100 x 615 x 200	1100 x 615 x 200
	Net / Gross weight (kg)	22 / 27	23 / 29	27 / 36	31 / 41	31 / 41
Pipe	Liquid size (mm)	6.35 (1/4)	6.35 (1/4)	6.35 (1/4)	9.52 (3/8)	9.52 (3/8)
	Gas size (mm)	9.52 (3/8)	9.52 (3/8)	12.70 (1/2)	15.88 (5/8)	15.88 (5/8)
Set temp. range	°C	16~30	16~30	16~30	16~30	16~30





# Multi split

## Specifications

### Multi split outdoor units

Model No.	Outdoor unit	MCHV54D12	MCHV73D13	MCHV81D14	MCHV10D14	MCHV11D15
Capacity	Cooling (kW)	5.40 (2.85 - 6.50)	7.30 (4.50 - 10.00)	8.15 (5.00 - 10.00)	10.00 (2.60 - 10.50)	11.40 (2.60 - 12.00)
	Heating (kW)	5.50 (2.40 - 6.65)	8.80 (4.00 - 11.00)	9.30 (3.00 - 11.00)	11.20 (2.60 - 12.00)	12.00 (2.60 - 13.00)
	Max indoor conductivity (cool)	8.10	10.95	12.22	15.00	17.10
AEER / ACOP	W / W (tested)	3.66 / 3.83	3.33 / 3.62	3.42 / 3.55	3.49 / 3.88	3.19 / 3.78
EER / COP	W / W (rated)	3.53 / 3.59	3.49 / 3.52	3.54 / 3.66	3.33 / 3.61	3.26 / 3.69
Power supply	V / Ph / Hz	220-240 / 1 / 50	220-240 / 1 / 50	220-240 / 1 / 50	220-240 / 1 / 50	220-240 / 1 / 50
Power input	Cooling (kW)	1.53	2.18	2.43	3.00	3.50
	Heating (kW)	1.53	2.50	2.54	3.10	3.25
Current input (max.)	Cooling (A)	6.48	9.96	10.71	12.49	15.13
	Heating (A)	6.04	10.75	11.19	13.21	13.98
Outdoor unit	Maximum drive IDU No.	2	3	4	4	5
	Sound pressure level (dB(A))	56	58	58	61	61
	Dimensions (W × D × H), outline (mm)	963 x 396 x 700	1001 x 427 x 790	1001 x 427 x 790	1087 x 440 x 1103	1087 x 440 x 1103
	Net / Gross weight (kg)	47.0 / 51.5	59.0 / 64.0	65.0 / 70.0	89.0 / 98.0	90.0 / 98.0
Refrigerant charge	R410A (kg)	1.6	2.2	2.3	3.65	3.65
Pipe	Pre-charge length (m)	10	30	40	40	40
	Additional charge (g/m)	20	20	20	20	20
	Max pipe length - Indoor to outdoor (m)	10	20	20	25	25
	Max pipe length - Sum of all indoors (m)	20	60	70	75	75
	Field connections (mm/inch)	2 x 6.35 (1/4) 2 x 9.52 (3/8)	3 x 6.35 (1/4) 3 x 9.52 (3/8)	4 x 6.35 (1/4) 4 x 9.52 (3/8)	4 x 6.35 (1/4) 4 x 9.52 (3/8)	5 x 6.35 (1/4) 5 x 9.52 (3/8)
	Max vertical separation Indoor to indoor (m)	5.0	5.0	5.0	7.5	7.5
	Max vertical separation Indoor above or below outdoor (m)	5.0	5.0	5.0	15.0	15.0
Electrical	Maximum current (amp)	12	21	21	30	30
	Recommended fuse (amp)	16	25	25	32	32
Ambient temperature range	Cooling (°C)	-15 ~ 43	-15 ~ 43	-15 ~ 43	-7 ~ 48	-7 ~ 48
	Heating (°C)	-15 ~ 24	-15 ~ 24	-15 ~ 24	-15 ~ 30	-15 ~ 30



### **BREEZAIR**

Ducted Evaporative Air Conditioning

### **BRAEMAR**

Ducted Evaporative Air Conditioning | Ducted Gas Heating | Add On Cooling  
Reverse Cycle Air Conditioning | Gas Wall Furnaces and Space Heaters

### **CLIMATE WIZARD**

Micro-Core® Technology

### **CONVAIR**

Portable Air Conditioning

### **COOLAIR**

Ducted Evaporative Air Conditioning

### **COOLERADO**

Indirect Evaporative Air Conditioning

### **AIRA**

Direct and Indirect Evaporative Air Conditioning | Ducted Gas Heating  
Commercial Gas Space Heating | Energy Recovery Systems

### **INTEGRATED COMFORT INCORPORATED (ICI)**

Dual Cool® Patented Dual Evaporative pre-cooling products

**[seeleyinternational.com/braemar](http://seeleyinternational.com/braemar)**

**1300 360 815**

**Seeley International Pty Ltd**

ABN 23 054 687 035

112 O'Sullivan Beach Road, Lonsdale, SA 5160

Phone: (08) 8328 3850 Fax: (08) 8328 3950

Email: [enquiries@seeleyinternational.com](mailto:enquiries@seeleyinternational.com)  
[seeleyinternational.com](http://seeleyinternational.com)

Information in this brochure was correct at the time of preparation. E & OE

Cat No M399 REV F (0920)